

CAST IN PLACE ANCHORS



Blue Banger Hanger™ Steel Deck Insert

Blue Banger Hanger Steel Deck Inserts are installed prior to pouring concrete which reduces installation and material costs and increases strength values. The parts take multiple sizes of threaded rod, have a large flanged head, and a 3" plastic sleeve to help keep threads clean. An installation tool is also available to punch a hole through the metal deck for ease of installation. The parts are also seismically qualified for use in cracked concrete. Installation is quick and easy, punch hole through metal deck – insert blue banger hanger, apply pressure to head of anchor to lock in place and pour concrete.

APPLICATIONS:

- For hanging threaded rod in overhead applications
- Cable trays
- Fire sprinkler pipes
- Suspended conduit
- Suspended ceiling and lighting
- Telecommunication installations
- Water pipes (plumbing)
- HVAC

FEATURES AND BENEFITS:

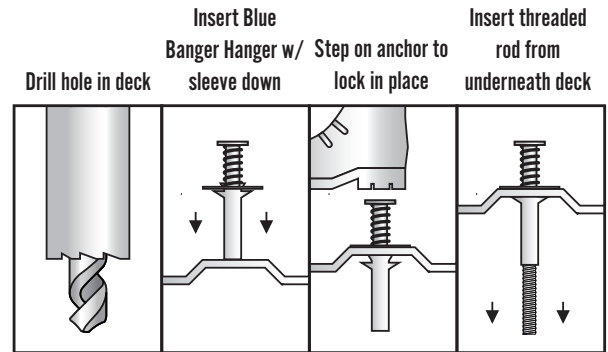
- The Steel Deck Inserts installed height of just 2 inches can be used through or between the ribs of the deck
- Patented grooved insert body prevents component separation even if the flange is broken off prior to pour
- Reduces inventory so three inserts can accommodate five threaded rod sizes
- Allows for threaded rod size changes after inserts are installed
- Internal threads eliminate the need and cost of couplings
- Keeps internal threads clean
- Extended length makes insert easy to locate even with fireproofing on deck underside
- Plastic sleeve provides guidance to align threaded rod with matching internal female threads
- Positions all inserts on the project at the same elevation to eliminate multiple all thread rod lengths and improve the accuracy of offsite prefabrication

APPROVALS:

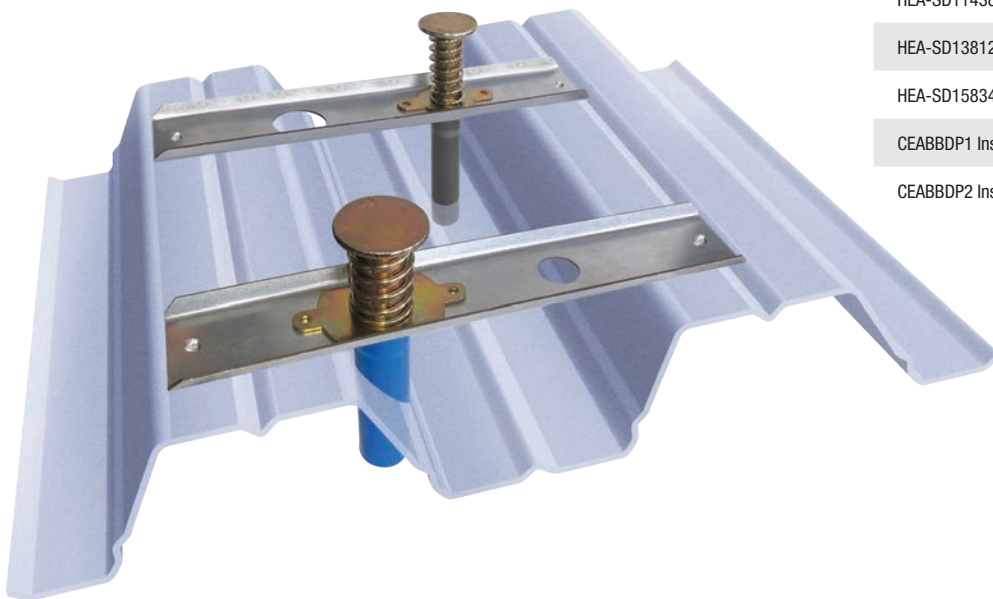
ICC-ES ESR-3599
UL Listed
FM Approved

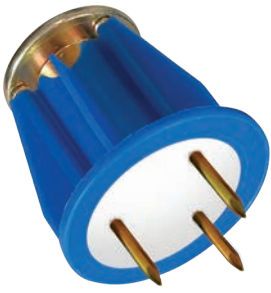


All reports listed below are owned by Tomarco /ISAT Construction Supplies



Part ID	Size	Box Quantity
HEA-SD1143812	1/4", 3/8", 1/2"	100
HEA-SD1381258	3/8", 1/2", 5/8"	50
HEA-SD15834	5/8", 3/4"	50
CEABBDP1 Install Tool	1/4" - 3/8"	1
CEABBDP2 Install Tool	3/8" - 5/8"	1





Blue Banger Hanger™ Pour In Place (PIP) Pour-in-Place Insert for the attachment of Threaded Rod

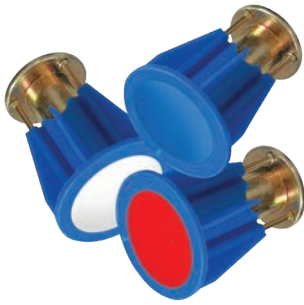
Pour-in-Place Inserts are used on wood form poured decks and installed prior to pouring concrete which reduces installation and material costs. Blue Banger Hanger PIP's are easy to use just strike the top of the hanger and drive the three mounting nails into the forming material until the bottom of the hanger is flush with the plywood. The hanger should be sitting 90 degrees perpendicular to the forming material. Once concrete is hardened, and forms are stripped, strike the mounting nails to break them off, it's that simple.

APPLICATIONS:

- For hanging threaded rod in overhead applications
- Cable trays
- Fire sprinkler pipes
- Suspended conduit
- Suspended ceiling and lighting
- Telecommunication installations
- Water pipes (plumbing)
- HVAC

FEATURES AND BENEFITS:

- Provides excellent shear values for overhead attachments
- Reduces inventory so three inserts can accommodate five threaded rod sizes
- Allows for threaded rod size changes after inserts are installed
- Internal threads eliminate the need and cost of couplings
- Blue plastic ring acts as insert locator when forms are removed
- Plastic ring creates countersunk recess to keep threads clean from pour residue



APPROVALS:

ICC-ES ESR-3599
UL Listed
FM Approved



All reports listed below are owned by Tomarco /ISAT Construction Supplies

NEW SLURRY SEAL:

- Slurry seal safeguards the internal threads from concrete during the pour
- Red, white and blue colored slurry seal labels identify the insert when used by multiple trades
- Does not catch rod threads or interfere with rod size changes
- Won't fall out like foam inserts



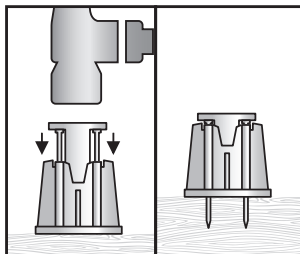
MULTI-THREAD SUPPORT:

- Multi-thread inserts reduce inventory - Compare to similar products who have as many as five insert sizes, one for each size
- Easily change rod sizes after the install - Not possible with single size inserts
- Slurry seal does not interfere with rod size changes, compare to similar products that are difficult to break plastic or foam inserts that tangle



Hammer PIP into
wood deck

Anchor set in
wood form



Part ID	Size	Box Quantity
HEA-PIP143812	1/4", 3/8", 1/2"	200
HEA-PIP381258	3/8", 1/2", 5/8"	100
HEA-PIP5834	5/8" - 3/4"	100
CEA-PIPInstall1 Tool	1/4", 3/8", 1/2"	1
CEA-PIPInstall2 Tool	5/8" - 3/4"	1

