



MEDIUM TO LIGHT DUTY MECHANICAL ANCHORS



MEDIUM TO LIGHT DUTY MECHANICAL ANCHORS

Strike Anchors



Aerosmith's Strike Anchor is a one-piece multi-purpose fastener specifically designed to be used in concrete, brick, grout filled block and stone. The anchor has a pre-expanded bend at the bottom of the anchor which straightens out to conform to the walls of the hole when hammered into the proper size pre-drilled hole. The anchor will always try to regain its pre-expanded bend which causes constant expansion pressure within the hole. This eliminates the need for any additional tightening or secondary setting operation. Sizes range from 3/16" diameter to 3/8" and are also available in tie wire, forming, and pipe hanging head styles. The mushroom head version makes an excellent choice for many tamper proof operations.

Concrete Screws



Aerosmith's Concrete Screw are designed to meet the demands of most light to medium duty applications. The screws are hardened and come with a blue environmental coating which allows them to be used in dry interior applications and some exterior applications. The product can be used in concrete, block and brick and manufactured with either a hex washer head or phillips head. Just pre-drill a hole using a proper size concrete drill bit and run the anchor into the pre-drilled hole. Each box of screws contains one drill bit.

Concrete Screw Carbide Bits



Carbide Concrete Bits for 3/16" and 1/4" concrete screws. (Blue)

Concrete Hangerz



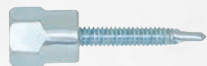
Aerosmith's Concrete Hangerz are designed for suspending threaded rod vertically overhead for pipe hanging, fire protection, electrical conduit and cable tray applications. The one-piece design makes it easy to install and is available with three different coupler sizes. Just drill the same diameter hole as the anchor body and run the anchor into pre-drilled hole using a corded or cordless impact wrench or a standard hand socket.

Wood Vertical Hangerz



Aerosmith's Wood Vertical Hangerz are a one-piece, all steel threaded fastening system for suspending steel threaded rod vertically overhead in pipe hanging, fire protection, electrical conduit and cable-tray applications. Parts come with a #17 Point for fast drilling into wood beams. Can be installed with a screw gun or hammer drill in rotation mode only.

Steel Vertical Hangerz



Aerosmith Steel Vertical Hangerz are an all steel fastening system that is used for suspending threaded rod vertically for pipe hanging, fire protection, electrical conduit and cable tray applications. The anchor is easy to install by just running the parts with a screw gun or hammer drill in rotation only mode. It is recommended the parts be installed using the Aerosmith universal socket.

Zinc & SS Nail-ins



The Zinc Nail-in Anchor is a light duty tamper proof anchor whose body is made of zinc alloy. The anchor can be purchased with either a carbon steel nail or a stainless steel nail depending on the application. The zinc nail-in can be used in concrete, block, brick and stone and is easy to install. Pre-drill the same diameter hole as the anchor body, position fixture in place, tap anchor into the pre-drilled hole, when flush, hammer the nail into the body of the anchor. Since the anchor body is made of zinc alloy, it is corrosive resistant when used in conjunction with the stainless steel nail. This anchor should not be used in overhead applications.

Removable Zinc Nail-ins

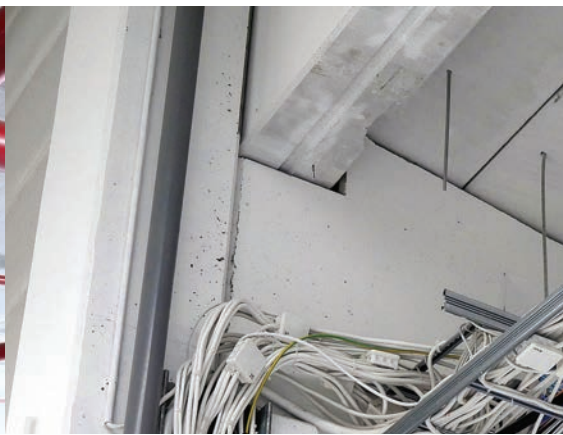


The Removable Zinc Nail-in Anchor is also a light duty anchor whose body is made of zinc alloy. This anchor comes with a carbon steel nail and can be used in concrete, block, brick and stone. Instead of a nail, this anchor has a screw so the fixture can be removed once installed. The removable zinc nail-in is easy to install. Pre-drill the same diameter hole as the body, position fixture in place, tap anchor into pre-drilled hole. When flush, hammer the screw into the body of the anchor. To remove, back out the screw to release the expansion mechanism. This anchor should not be used in overhead applications.

LIGHT DUTY SELECTION GUIDE

- Suitable
- May be Suitable

	Page	Base Material										Anchor Diameter										Head Style				Coating Material												
		Concrete	Lightweight Concrete	Hollow Core Plank	Grout-filled Concrete Masonry	Hollow Concrete Masonry	Solid Brick	Hollow Brick	Stone	Structural Clay/Tile	Plywood	Wallboard/Plaster	No. 4 Screw	No. 5 Screw	No. 6 Screw	No. 7 Screw	No. 8 Screw	No. 9 Screw	No. 10 Screw	No. 12 Screw	No. 14 Screw	No. 16 Screw	No. 18 Screw	1/8"	3/16"	1/4"	5/16"	3/8"	1/2"	Finished Hex Head	Round Head	Flat Head (Countersunk)	Mushroom Head	Removable	Zinc Plated Carbon Steel	Zamac Alloy	Nylon/Plastic	Lead
Hollow Wall Anchors	Toggle Bolt			○	●		○		○	●	●													●	●	●	●	●		●	●	●		●				
	Nylon Drywall Toggle	37		○	●		○		○	○	●						●	●	●						●	●								●		●		
Drywall Anchors	Zinc EZ Zip Drywall Anchor	37									●		●	●	●																			●		●		
	Nylon EZ Zip Anchor	37									●		●	●	●																			●		●		





Strike Anchors

Aerosmith's Strike Anchor is a one-piece multi-purpose fastener specifically designed to be used in concrete, brick, grout filled block and stone. The anchor has a pre-expanded bend at the bottom of the anchor which straightens out to conform to the walls of the hole when hammered into the proper size pre-drilled hole. The anchor will always try to regain its pre-expanded bend which causes constant expansion pressure within the hole. This eliminates the need for any additional tightening or secondary setting operation. Sizes range from 3/16" diameter to 3/8" and are also available in tie wire, forming, and pipe hanging head styles. The mushroom head version makes an excellent choice for many tamper proof applications.

APPLICATIONS:

- Pipe hanging
- Cable trays
- Metal track to concrete
- Security fixtures
- Concrete formwork
- Bicycle racks
- HVAC straps
- Electrical boxes
- Signage

FEATURES AND BENEFITS:

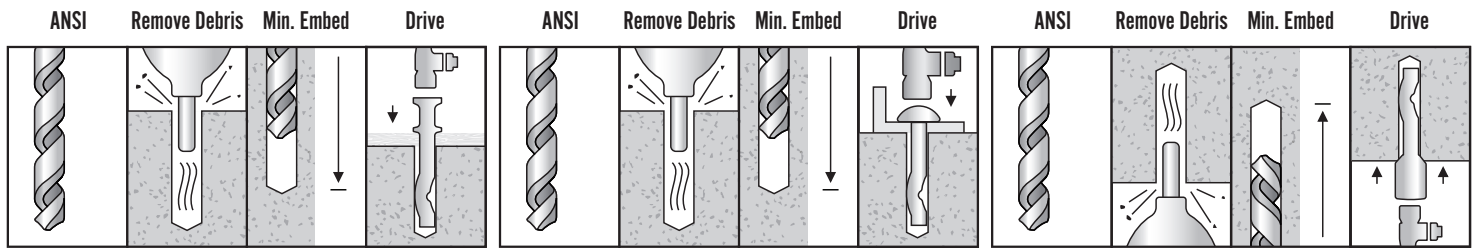
- One-piece pre-expanding anchor
- Tamper resistant (flat and mushroom head)
- No secondary setting operation
- Hole size is the same as anchor size
- No special tools required

BASE MATERIAL:

- Concrete
- Brick
- Grout filled block
- Stone

ANCHOR COMPONENT MATERIALS:

Anchor Body AISI 1038 Carbon Steel, Zinc Plated



FORMING HEAD STRIKE

MUSHROOM HEAD STRIKE

PIPE STRIKE

Part ID	Product Name	Description	Overall Length	Diameter	MUST USE ANSI Drill Bit	Min. Embed	Box Quantity	Carton Quantity
SPM316100	Zinc Strike	3/16" X 1" (Mushroom Head)	1"	3/16"	3/16"	7/8"	100	1200
SPM316114	Zinc Strike	3/16" X 1-1/4" (Mushroom Head)	1-1/4"	3/16"	3/16"	7/8"	100	1200
SPM316112	Zinc Strike	3/16" X 1-1/2" (Mushroom Head)	1-1/2"	3/16"	3/16"	1-1/4"	100	1200
SPM316200	Zinc Strike	3/16" X 2" (Mushroom Head)	2"	3/16"	3/16"	1-1/4"	100	1200
SPM316212	Zinc Strike	3/16" X 2-1/2" (Mushroom Head)	2-1/2"	3/16"	3/16"	1-1/4"	100	1200
SPM316300	Zinc Strike	3/16" X 3" (Mushroom Head)	3"	3/16"	3/16"	1-1/4"	100	800
SPM316400	Zinc Strike	3/16" X 4" (Mushroom Head)	4"	3/16"	3/16"	1-1/4"	100	800
SPM141000	Zinc Strike	1/4" X 1" (Mushroom Head)	1"	1/4"	1/4"	7/8"	100	1200
SPM141140	Zinc Strike	1/4" X 1-1/4" (Mushroom Head)	1-1/4"	1/4"	1/4"	1"	100	1200
SPM141120	Zinc Strike	1/4" X 1-1/2" (Mushroom Head)	1-1/2"	1/4"	1/4"	1-1/4"	100	1200
SPM142000	Zinc Strike	1/4" X 2" (Mushroom Head)	2"	1/4"	1/4"	1-1/4"	100	800
SPM142120	Zinc Strike	1/4" X 2-1/2" (Mushroom Head)	2-1/2"	1/4"	1/4"	1-1/4"	100	800
SPM143000	Zinc Strike	1/4" X 3" (Mushroom Head)	3"	1/4"	1/4"	1-1/4"	100	800
SPM143120	Zinc Strike	1/4" X 3-1/2" (Mushroom Head)	3-1/2"	1/4"	1/4"	1-1/4"	100	800
SPM144000	Zinc Strike	1/4" X 4" (Mushroom Head)	4"	1/4"	1/4"	1-1/4"	100	800
SPM382000	Zinc Strike	3/8" X 2" (Mushroom Head)	2"	3/8"	3/8"	1-3/4"	25	300
SPM382120	Zinc Strike	3/8" X 2-1/2" (Mushroom Head)	2-1/2"	3/8"	3/8"	1-3/4"	25	300
SPM383000	Zinc Strike	3/8" X 3" (Mushroom Head)	3"	3/8"	3/8"	1-3/4"	25	300
SPM384000	Zinc Strike	3/8" X 4" (Mushroom Head)	4"	3/8"	3/8"	1-3/4"	25	200
SPM385000	Zinc Strike	3/8" X 5" (Mushroom Head)	5"	3/8"	3/8"	1-3/4"	25	150
STW316	Strike	3/16" (Tie Wire Head)	1-1/8"	3/16"	3/16"	1-1/4"	100	800
STW140	Strike	1/4" (Tie Wire Head)	1-1/8"	1/4"	1/4"	1-1/4"	100	800
SPF316112	Forming Strike	3/16" X 1-1/2"	1-1/2"	3/16"	3/16"	1-1/4"	100	1200
SPF316200	Forming Strike	3/16" X 2"	2"	3/16"	3/16"	1-1/4"	100	800
SPF316234	Forming Strike	3/16" X 2-3/4"	2-3/4"	3/16"	3/16"	1-1/4"	100	600
SPF142340	Forming Strike	1/4" X 2-3/4"	2-3/4"	1/4"	1/4"	1-1/4"	100	600
SPP14	Strike Internally Threaded	1/4" body with 1/4" Coupler	1-1/4"	1/4"	1/4"	1-1/4"	100	1200
SPP38	Strike Internally Threaded	1/4" body with 3/8" Coupler	1-3/4"	1/4"	1/4"	1-3/4"	50	400



Concrete Screws Tested in accordance with AC 193, AC 106, AC 233, AC 257 criteria

Aerosmith's Concrete Screws are designed to meet the demands of most light to medium duty applications. The screws are hardened and come with a blue environmental coating which allows them to be used in dry interior applications and some exterior applications. The product can be used in concrete, block and brick and manufactured with either a hex washer head or phillips head. Just pre-drill a hole using a proper size concrete drill bit and run anchor into pre-drill hole. Each box of screws contains one drill bit.

APPLICATIONS:

- Metal door frames
- Window installations
- Shutters
- Joint flashings
- Electrical boxes
- Light fixtures
- Signage
- Electrical junction boxes
- Conduit clips to masonry.
- Wood headers/furring strips to masonry
- HVAC straps to masonry
- Plywood to masonry
- Exterior insulation to masonry

FEATURES AND BENEFITS:

- Available in both slotted hex head and phillips flat head
- No hole spotting required
- Product cuts its own threads into masonry
- Coating reduces corrosion
- Can be used in light to medium duty applications

BASE MATERIAL:

- Concrete
- Masonry

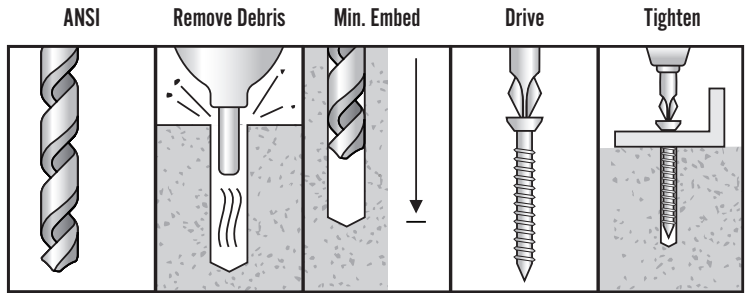
HEAD STYLES:

- Phillips
- Slotted hex head

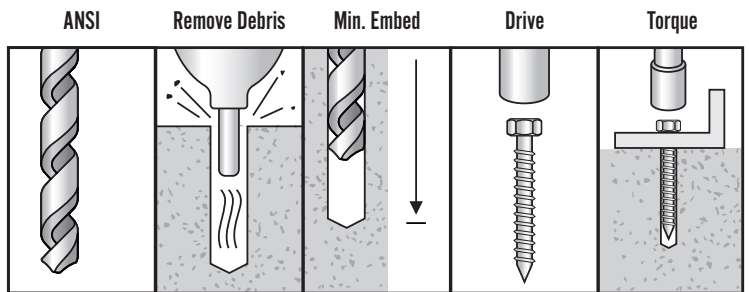


ANCHOR COMPONENT MATERIALS:

Body- Heat treated Carbon Steel, Coating- Environmental (Blue)



PHILLIPS HEAD



HEX HEAD

Part ID	Description	Overall Length	Diameter	Min. Embed	Drill Bit	Box Quantity	Carton Quantity
*TCH316114	3/16" X 1-1/4"	1-1/4"	3/16"	1-1/4"	5/32"	100	500
*TCH316134	3/16" X 1-3/4"	1-3/4"	3/16"	1-1/4"	5/32"	100	500
TCH316214	3/16" X 2-1/4"	2-1/4"	3/16"	1-1/4"	5/32"	100	500
TCH316234	3/16" X 2-3/4"	2-3/4"	3/16"	1-1/4"	5/32"	100	500
TCH316314	3/16" X 3-1/4"	3-1/4"	3/16"	1-1/4"	5/32"	100	500
TCH316334	3/16" X 3-3/4"	3-3/4"	3/16"	1-1/4"	5/32"	100	500
TCH316400	3/16" X 4"	4"	3/16"	1-1/4"	5/32"	100	500
*TCH141140	1/4" X 1-1/4"	1-1/4"	1/4"	1-1/4"	3/16"	100	500
TCH141340	1/4" X 1-3/4"	1-3/4"	1/4"	1-1/4"	3/16"	100	500
TCH142140	1/4" X 2-1/4"	2-1/4"	1/4"	1-1/4"	3/16"	100	500
TCH142340	1/4" X 2-3/4"	2-3/4"	1/4"	1-1/4"	3/16"	100	500
TCH143140	1/4" X 3-1/4"	3-1/4"	1/4"	1-1/4"	3/16"	100	500
TCH143340	1/4" X 3-3/4"	3-3/4"	1/4"	1-1/4"	3/16"	100	500
TCH144000	1/4" X 4"	4"	1/4"	1-1/4"	3/16"	100	500

*This size is less than required minimum standard anchor length for strength design

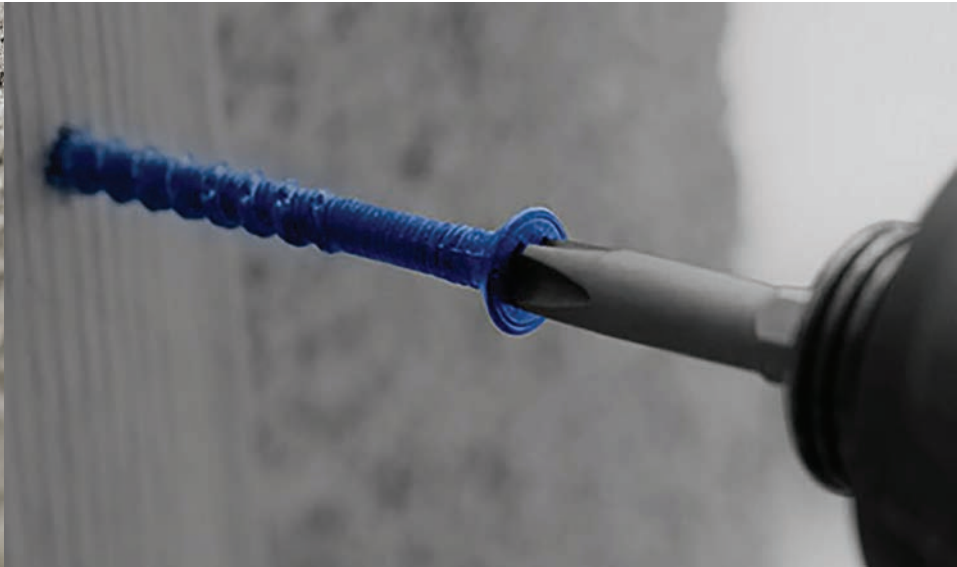
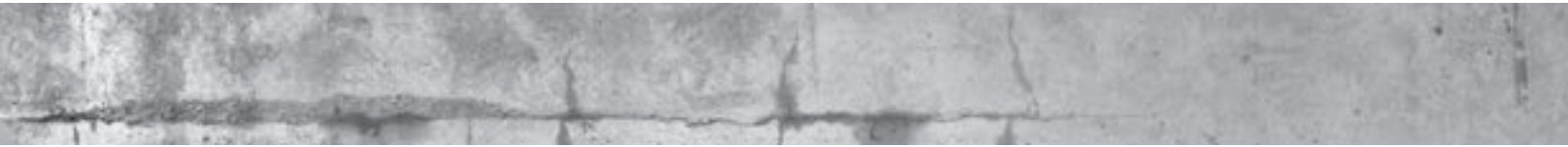
Part ID	Description	Overall Length	Diameter	Min. Embed	Drill Bit	Box Quantity	Carton Quantity
*TCP316114	3/16" X 1-1/4"	1-1/4"	3/16"	1-1/4"	5/32"	100	500
*TCP316134	3/16" X 1-3/4"	1-3/4"	3/16"	1-1/4"	5/32"	100	500
TCP316214	3/16" X 2-1/4"	2-1/4"	3/16"	1-1/4"	5/32"	100	500
TCP316234	3/16" X 2-3/4"	2-3/4"	3/16"	1-1/4"	5/32"	100	500
TCP316314	3/16" X 3-1/4"	3-1/4"	3/16"	1-1/4"	5/32"	100	500
TCP316334	3/16" X 3-3/4"	3-3/4"	3/16"	1-1/4"	5/32"	100	500
TCP316400	3/16" X 4"	4"	3/16"	1-1/4"	5/32"	100	500
*TCP141140	1/4" X 1-1/4"	1-1/4"	1/4"	1-1/4"	3/16"	100	500
*TCP141340	1/4" X 1-3/4"	1-3/4"	1/4"	1-1/4"	3/16"	100	500
TCP142140	1/4" X 2-1/4"	2-1/4"	1/4"	1-1/4"	3/16"	100	500
TCP142340	1/4" X 2-3/4"	2-3/4"	1/4"	1-1/4"	3/16"	100	500
TCP143140	1/4" X 3-1/4"	3-1/4"	1/4"	1-1/4"	3/16"	100	500
TCP143340	1/4" X 3-3/4"	3-3/4"	1/4"	1-1/4"	3/16"	100	500
TCP144000	1/4" X 4"	4"	1/4"	1-1/4"	3/16"	100	500
TCP145000	1/4" X 5"	5"	1/4"	1-1/4"	3/16"	100	500
TCP146000	1/4" X 6"	6"	1/4"	1-1/4"	3/16"	100	500

Concrete Screw Carbide Bits

Concrete Screw Bits are to be used for the installation of Aerosmith's 1/4" - 3/16" concrete screws.



Part ID	Description	Overall Length	Diameter	Bag	Carton Quantity
CSB532312	Concrete Screw Bits 5/32" X 3-1/2"	5/32"	3-1/2"	10 per bag	50
CSB532412	Concrete Screw Bits 5/32" X 4-1/2"	5/32"	4-1/2"	10 per bag	50
CSB532512	Concrete Screw Bits 5/32" X 5-1/2"	5/32"	5-1/2"	10 per bag	50
CSB316312	Concrete Screw Bits 3/16" X 3-1/2"	3/16"	3-1/2"	10 per bag	50
CSB316412	Concrete Screw Bits 3/16" X 4-1/2"	3/16"	4-1/2"	10 per bag	50
CSB316512	Concrete Screw Bits 3/16" X 5-1/2"	3/16"	5-1/2"	10 per bag	50
CSB316612	Concrete Screw Bits 3/16" X 6-1/2"	3/16"	6-1/2"	10 per bag	50
CSB316712	Concrete Screw Bits 3/16" X 7-1/2"	3/16"	7-1/2"	10 per bag	50





Concrete Hangerz

Aerosmith's Concrete Hangerz are designed for suspending threaded rod vertically overhead for pipe hanging fire protection, electrical conduit and cable tray applications. The one-piece design makes it easy to install and is available with three different coupler sizes. Just drill the same diameter hole as the anchor body and run the anchor into pre-drilled hole using a corded or cordless impact wrench or standard hand socket.

APPLICATIONS:

- Suspended ceilings
- Cable trays
- Overhead utilities
- Air conditioning
- Ventilation systems
- Lighting systems

FEATURES AND BENEFITS:

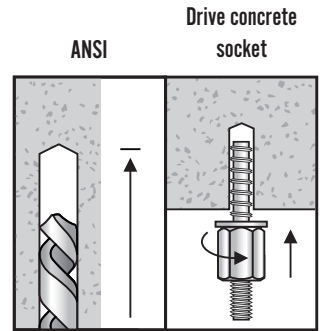
- Quick installation time
- Stress applied across full length of anchor
- Can be installed close to edge applications
- Fully removable

BASE MATERIAL:

- Stone
- Concrete
- Block
- Brick

ANCHOR COMPONENT MATERIALS:

- Carbon Steel - with Zinc plating



Part ID	Description	Usable Length	Diameter	Insert Rod	Box Quantity	Carton Quantity
VHC1411414	Concrete Hanger 1/4" x 1-1/4" with 1/4" Coupler	1-1/4"	1/4"	Insert 1/4" Rod	25	250
VHC1411238	Concrete Hanger 1/4" x 1-1/2" with 3/8" Coupler	1-1/2"	1/4"	Insert 3/8" Rod	25	250
VHC3823412	Concrete Hanger 3/8" x 2-3/4" with 1/2" Coupler	2-3/4"	3/8"	Insert 1/2" Rod	25	200



Wood Vertical Hangerz:

Aerosmith's Wood Vertical Hangerz is an all steel threaded fastener used for suspending threaded rod in wood base materials. The anchor is easy to install by running the parts with a screw gun or hammer drill in rotation only mode. It is recommended the parts be installed using the Aerosmith universal socket.

APPLICATIONS:

- Hanging Pipe and Sprinkler Systems
- Lighting Systems and Overhead Utilities
- Suspended Ceilings
- Suspending Conduit
- Cable Trays
- HVAC Ductwork
- Strut Channels
- Security Equipment

FEATURES AND BENEFITS:

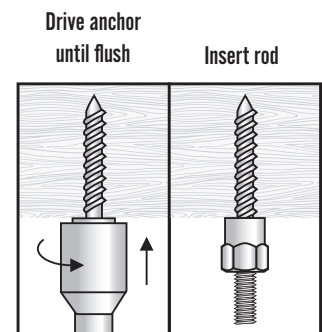
- Quick installation time
- Stress applied across full length of anchor
- Can be installed close to edge applications
- Fully removable

BASE MATERIAL:

- Wood frame columns
- Wood frame beams

ANCHOR COMPONENT MATERIALS:

Zinc Plated Carbon Steel #17 Point



Part ID	Description	Usable Length	Diameter	Insert Rod	Box Quantity	Carton Quantity
VHW14214	Wood Hanger 1/4" x 2" with 1/4" Coupler	2"	1/4"	Insert 1/4" Rod	25	250
VHW14238	Wood Hanger 1/4" x 2" with 3/8" Coupler	2"	3/8"	Insert 3/8" Rod	25	250
VHW51621238	Wood Hanger 5/16" x 2-1/2" with 3/8" Coupler	2-1/2"	3/8"	Insert 3/8" Rod	25	250



Steel Vertical Hangerz

Aerosmith Steel Vertical Hangerz are an all steel fastening system that is used for suspending threaded rod vertically for pipe hanging, fire protection, electrical conduit and cable tray applications. The anchor is easy to install by just running the parts with a screw gun or hammer drill in rotation only mode. It is recommended the parts be installed using the Aerosmith universal socket.

APPLICATIONS:

- Hanging pipe and sprinkler systems
- Lighting systems and overhead utilities
- Suspended ceilings
- Suspending conduit
- Cable trays
- HVAC ductwork
- Strut channels
- Security equipment

FEATURES AND BENEFITS:

- Rod hanging application system in steel
- Rapid installation for overhead applications
- Steel Hangerz can be installed with a hammer drill (rotation only) or screw gun

BASE MATERIAL:

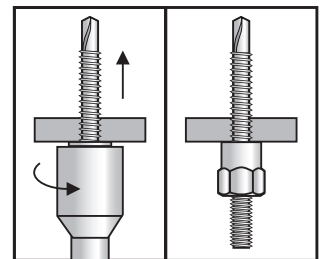
- Steel bar joists
- Wood column
- Steel beams

ANCHOR COMPONENT MATERIALS:

Zinc Plated Carbon Steel #3 Point

Part ID	Description	Usable Length	Diameter	Insert Rod	Box Quantity	Carton Quantity
VHS14114	Steel Hanger 1/4" x 1" with 1/4" Coupler	1"	1/4"	Insert 1/4" Rod	25	250
VHS14138WN	Steel Hanger 1/4" x 1" w/nut-3/8" Coupler	1"	3/8"	Insert 3/8" Rod	25	250
VHS1411238N	Steel Hanger 1/4" x 1-1/2" w/nut-3/8" Coupler	1-1/2"	3/8"	Insert 3/8" Rod	25	250
VHS122011238N	Steel Hanger 12- 20 x 1-1/2" w/nut-1/2" Coupler	1-1/2"	1/2"	Insert 1/2" Rod	25	250

Drive anchor until flush Insert rod



Universal Socket for Steel & Wood

Sockets

Part ID	Description	Box Quantity	Carton Quantity
US1	Universal Steel & Wood Socket	5	25
CS14	1/4" Concrete Socket	5	25
CS38	3/8" Concrete Socket	5	25
CS12	1/2" Concrete Socket	5	25



Concrete Socket



Zinc Nail-ins

Zinc Nail-in Anchors

The Zinc Nail-in Anchor is a light duty tamper proof anchor whose body is made of zinc alloy. The anchor can be purchased with either a carbon steel nail or a stainless steel nail depending on the application. The zinc nail-in can be used in concrete, block, brick and stone and is easy to install. Pre-drill the same diameter hole as the anchor body, position fixture in place, tap anchor into the pre-drilled hole, when flush, hammer the nail into the body of the anchor. Since the anchor body is made of zinc alloy, it is corrosive resistant when used in conjunction with the stainless steel nail. This anchor should not be used in overhead applications.

APPLICATIONS:

- Drywall track
- Light duty signage
- Brick ties
- Parapet flashing

FEATURES AND BENEFITS:

- Fast installation
- Nails available in stainless steel
- No special tools needed
- Can be used in a variety of base materials
- Flush appearance when properly set
- Available in removable version

BASE MATERIAL:

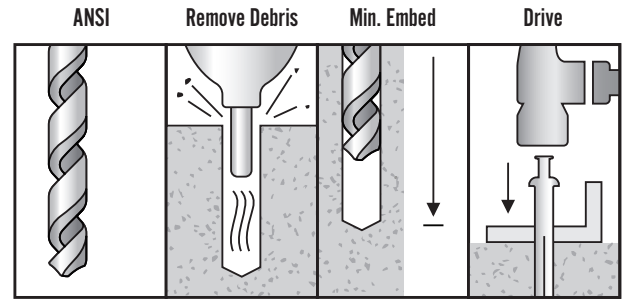
- Concrete
- Brick
- Block
- Stone



SS Nail-ins

ANCHOR COMPONENT MATERIALS:

- Zinc Zamac Alloy (Body)
- Carbon Steel (Nail) AISI 1018
- Stainless Steel (Nail) Type 304 SS



Part ID	Product Name	Description	Overall Length	Overall Diameter	ANSI Drill Diameter	Min. Embed	Box Quantity	Carton Quantity
ZNMH31678	Zinc Nail-In	3/16 X 7/8 (Mushroom Head)	7/8"	3/16"	3/16"	3/4"	100	500
ZNMH1434	Zinc Nail-In	1/4 X 3/4 (Mushroom Head)	3/4"	1/4"	1/4"	5/8"	100	500
ZNMH141	Zinc Nail-In	1/4 X 1 (Mushroom Head)	1"	1/4"	1/4"	7/8"	100	500
ZNMH14114	Zinc Nail-In	1/4 X 1 1/4 (Mushroom Head)	1-1/4"	1/4"	1/4"	1"	100	500
ZNMH14112	Zinc Nail-In	1/4 X 1 1/2 (Mushroom Head)	1-1/2"	1/4"	1/4"	1-1/4"	100	500
ZNMH142	Zinc Nail-In	1/4 X 2 (Mushroom Head)	2"	1/4"	1/4"	1-1/2"	100	500
ZNMH143	Zinc Nail-In	1/4 X 3 (Mushroom Head)	3"	1/4"	1/4"	2-1/2"	100	500

Part ID	Product Name	Description	Overall Length	Overall Diameter	ANSI Drill Diameter	Min. Embed	Box Quantity	Carton Quantity
ZNMHSS141	SS Nail-In	1/4 X 1 (Mushroom Head)	1"	1/4"	1/4"	7/8"	100	500
ZNMHSS14114	SS Nail-In	1/4 X 1 1/4 (Mushroom Head)	1-1/4"	1/4"	1/4"	1"	100	500
ZNMHSS14112	SS Nail-In	1/4 X 1 1/2 (Mushroom Head)	1-1/2"	1/4"	1/4"	1-1/4"	100	500
ZNMHSS142	SS Nail-In	1/4 X 2 (Mushroom Head)	2"	1/4"	1/4"	1-1/2"	100	500



Removable Zinc Nail-in Anchors

The Removable Zinc Nail-In Anchor is a medium to light duty anchor whose body is made of zinc alloy and its screw made of carbon steel. Unlike the standard zinc nail-in, this product comes with a screw rather than a nail so that once installed, it can be removed. The product can be used in concrete, brick, block and stone and is easy to install. Pre-drill the same diameter hole as the anchor body, position fixture in place, tap anchor into pre-drilled hole. When flush, hammer the head of the screw into the body of the anchor. To remove, just back out the screw to release the expansion mechanism. This anchor should not be used in overhead applications.

APPLICATIONS:

- Drywall track
- Light duty signage
- Brick ties
- Parapet flashing

FEATURES AND BENEFITS:

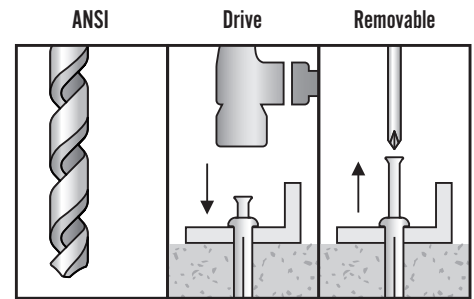
- Fast installation
- Nails available in stainless steel
- No special tools needed
- Can be used in a variety of base materials
- Flush appearance when properly set
- Available in removable version

BASE MATERIAL:

- Concrete
- Brick
- Block
- Stone

ANCHOR COMPONENT MATERIALS:

- Zinc Zamac Alloy (Body)
- Carbon Steel (Screws)



Part ID	Product Name	Description	Overall Length	Overall Diameter	ANSI Drill Diameter	Min. Embed	Box Quantity	Carton Quantity
ZNHS1434	Removable Zinc Nail-In	1/4 X 3/4"	3/4"	1/4"	1/4"	5/8"	100	500
ZNHS141	Removable Zinc Nail-In	1/4 X 1"	1"	1/4"	1/4"	7/8"	100	500
ZNHS14114	Removable Zinc Nail-In	1/4 X 1-1/4"	1-1/4"	1/4"	1/4"	1"	100	500
ZNHS14112	Removable Zinc Nail-In	1/4 X 1-1/2"	1-1/2"	1/4"	1/4"	1-1/4"	100	500
ZNHS142	Removable Zinc Nail-In	1/4 X 2"	2"	1/4"	1/4"	1-1/2"	100	500
ZNHS143	Removable Zinc Nail-In	1/4 X 3"	3"	1/4"	1/4"	2-1/2"	100	500