



# THREADED ROD & ACCESSORIES

## Superior strength, maximum versatility.

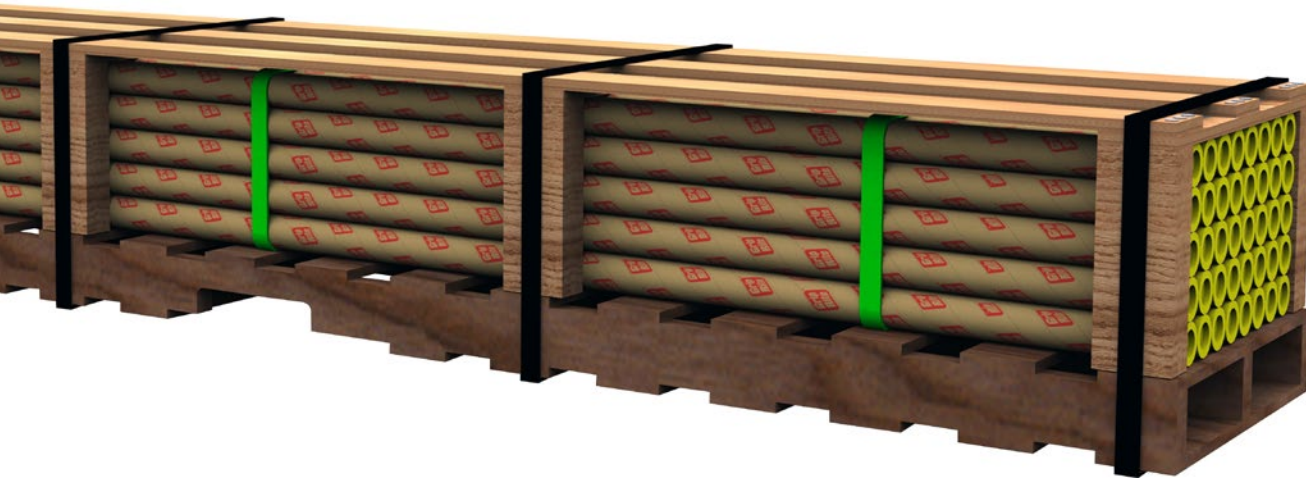




# THREADED ROD & ACCESSORIES

Threaded rod is used for general purpose fastening and installation. Used in any place that a long bolt is required, threaded rod can be cut to the exact desired length. Common applications include sprinkler systems, H.V.A.C., suspended ceilings, ductwork, lighting, electrical systems, and concrete form work.

- ☑ Right hand coarse thread
- ☑ Low carbon steel
- ☑ Conforms to ASTM A307
- ☑ Available in a wide variety of dimensions, lengths and finishes
- ☑ Rolled thread to UNC Class 1A
- ☑ Cut sizes (1 ft. - 3 ft.) are available upon request



## Color Coded Labels & Tube End Caps



Bright Unplated



Hot Dipped Galvanized  
ASTM A153  
or F2329



Zinc Plated



Stainless Steel

 <p><b>THREAD TIGE FILE VARILLA</b></p> <p><b>3/8" x 6'</b> 9.53 cm x 1.83 m</p> <p><b>Bright Brillant Brillante</b></p> <p><b>25</b> Pieces Piezas</p> <p>Made in China Fabriqué en Chine Hecho en China</p> <p><small>Grip-Rite® threaded metal Les tiges en métal filetés PrimeSource Building 1321 Greenway Drive, Irving, TX 75038-2504 USA</small></p> <p><b>PRIME SOURCE</b> BUILDING PRODUCTS, INC. 800-676-7777 www.grip-rite.com www.primesourcebp.com</p> <p><b>AT</b></p>  <p>1 07 6</p>	 <p><b>THREAD TIGE FILE VARILLA</b></p> <p><b>3/8" x 10'</b> 9.53 cm x 3.05 m</p> <p><b>Hot Dipped Galvanisé par à chaud Galvanizado por en caliente</b></p> <p><b>25</b> Pieces Piezas</p> <p>Made in China Fabriqué en Chine Hecho en China</p> <p><small>Grip-Rite® threaded metal Les tiges en métal filetés PrimeSource Building 1321 Greenway Drive, Irving, TX 75038-2504 USA</small></p> <p><b>PRIME SOURCE</b> BUILDING PRODUCTS, INC. 800-676-7777 www.grip-rite.com www.primesourcebp.com</p> <p><b>AT</b></p>  <p>1 07 6</p>	 <p><b>THREAD TIGE FILE VARILLA</b></p> <p><b>1/4" x 6'</b> 6.35 cm x 1.83 m</p> <p><b>Zinc Plated Plaqué zinc Revestimiento</b></p> <p><b>50</b> Pieces Piezas</p> <p>Made in China Fabriqué en Chine Hecho en China</p> <p><small>Grip-Rite® threaded metal Les tiges en métal filetés PrimeSource Building 1321 Greenway Drive, Irving, TX 75038-2504 USA</small></p> <p><b>PRIME SOURCE</b> BUILDING PRODUCTS, INC. 800-676-7777 www.grip-rite.com www.primesourcebp.com</p> <p><b>AT</b></p>  <p>5 07 6</p>	 <p><b>THREADED ROD TIGE FILETÉE VARILLA ROSCADA</b></p> <p><b>3/8" x 6'</b> 9.53 cm x 1.83 m</p> <p><b>Stainless Steel Acier inoxydable Acero inoxidable</b></p> <p><b>25</b> Pieces Piezas</p> <p>Made in China Fabriqué en Chine Hecho en China</p> <p><small>Grip-Rite® threaded metal rod is distributed by: Les tiges en métal filetés Grip-Rite sont distribuées par: PrimeSource Building Products, Inc. 1321 Greenway Drive, Irving, TX 75038-2504 USA</small></p> <p><b>PRIME SOURCE</b> BUILDING PRODUCTS, INC. 800-676-7777 www.grip-rite.com www.primesourcebp.com</p> <p><b>ATSS38072</b></p>  <p>1 07 64666 56404 3</p>
--	--	--	--

## Threaded Rod

Size	Threads/ Inch	Weight/ Piece	Pcs./ Tube	Tubes/ Pallet	Pallets/ 20 ft. Container	SKU
<b>Bright Unplated</b>						
3/8" x 6'	16	1.69 lb.	25	50	19	AT38072
3/8" x 10'	16	2.82 lb.	25	40	15	AT38120
3/8" x 12'	16	3.39 lb.	25	40	12	AT38144
1/2" x 6'	13	3.03 lb.	12	50	22	AT12072
1/2" x 10'	13	5.06 lb.	12	40	15	AT12120
1/2" x 12'	13	6.07 lb.	12	40	13	AT12144
5/8" x 6'	11	5.06 lb.	8	50	21	AT58072
5/8" x 10'	11	8.44 lb.	8	40	15	AT58120
5/8" x 12'	11	10.1 lb.	8	40	13	AT58144
3/4" x 6'	10	7.30 lb.	5	50	23	AT34072
3/4" x 10'	10	12.2 lb.	5	40	15	AT34120
3/4" x 12'	10	14.6 lb.	5	40	14	AT34144
7/8" x 6'	9	10.0 lb.	4	50	21	AT78072
7/8" x 10'	9	16.7 lb.	4	40	15	AT78120
7/8" x 12'	9	20.0 lb.	4	40	13	AT78144
1" x 6'	8	13.1 lb.	3	50	21	AT1072
1" x 10'	8	21.9 lb.	3	40	15	AT1120
1" x 12'	8	26.3 lb.	3	40	13	AT1144
1-1/8" x 6'	7	20.8 lb.	2	50	25	AT118072
1-1/8" x 10'	7	34.7 lb.	2	40	15	AT118120
1-1/8" x 12'	7	41.7 lb.	2	40	15	AT118144
1-1/4" x 6'	7	21.4 lb.	2	50	20	AT114072
1-1/4" x 10'	7	35.6 lb.	2	40	15	AT114120
1-1/4" x 12'	7	42.8 lb.	2	40	12	AT114144
1-1/2" x 6'	6	30.3 lb.	1	50	27	AT112072
1-1/2" x 10'	6	50.5 lb.	1	40	15	AT112120
1-1/2" x 12'	6	60.6 lb.	1	40	15	AT112144
<b>Hot Dipped Galvanized ASTM A153 or F2329</b>						
3/8" x 6'	16	1.69 lb.	25	50	19	ATHG38072
3/8" x 10'	16	2.82 lb.	25	40	15	ATHG38120
3/8" x 12'	16	3.39 lb.	25	40	12	ATHG38144
1/2" x 6'	13	3.03 lb.	12	50	22	ATHG12072
1/2" x 10'	13	5.06 lb.	12	40	15	ATHG12120
1/2" x 12'	13	6.07 lb.	12	40	13	ATHG12144
5/8" x 6'	11	5.06 lb.	8	50	21	ATHG58072
5/8" x 10'	11	8.44 lb.	8	40	15	ATHG58120
5/8" x 12'	11	10.1 lb.	8	40	13	ATHG58144
3/4" x 6'	10	7.30 lb.	5	50	23	ATHG34072
3/4" x 10'	10	12.2 lb.	5	40	15	ATHG34120





# THREADED ROD & ACCESSORIES

## Threaded Rod (continued)

Size	Threads/ Inch	Weight/ Piece	Pcs./ Tube	Tubes/ Pallet	Pallets/ 20 ft. Container	SKU
<b>Hot Dipped Galvanized ASTM A153 or F2329</b>						
3/4" x 12'	10	14.6 lb.	5	40	14	ATHG34144
7/8" x 6'	9	10.0 lb.	4	50	21	ATHG78072
7/8" x 10'	9	16.7 lb.	4	40	15	ATHG78120
7/8" x 12'	9	20.0 lb.	4	40	13	ATHG78144
1" x 6'	8	13.1 lb.	3	50	21	ATHG1072
1" x 10'	8	21.9 lb.	3	40	15	ATHG1120
1" x 12'	8	26.3 lb.	3	40	13	ATHG1144
1-1/8" x 6'	7	20.8 lb.	2	50	25	ATHG118072
1-1/8" x 10'	7	34.7 lb.	2	40	15	ATHG118120
1-1/8" x 12'	7	41.7 lb.	2	40	15	ATHG118144
1-1/4" x 6'	7	21.4 lb.	2	50	20	ATHG114072
1-1/4" x 10'	7	35.6 lb.	2	40	15	ATHG114120
1-1/4" x 12'	7	42.8 lb.	2	40	12	ATHG114144
1-1/2" x 6'	6	30.3 lb.	1	50	27	ATHG112072
1-1/2" x 10'	6	50.5 lb.	1	40	15	ATHG112120
1-1/2" x 12'	6	60.6 lb.	1	40	15	ATHG112144
<b>Zinc Plated ASTM F1941 FeZn3A</b>						
1/4" x 6'	20	0.71 lb.	50	50	23	ATZ14072
1/4" x 10'	20	1.18 lb.	50	40	15	ATZ14120
1/4" x 12'	20	1.41 lb.	50	40	14	ATZ14144
5/16" x 6'	18	1.21 lb.	35	50	20	ATZ516072
5/16" x 10'	18	2.02 lb.	35	40	15	ATZ516120
5/16" x 12'	18	2.43 lb.	35	40	12	ATZ516144
3/8" x 6'	16	1.69 lb.	25	50	19	ATZ38072
3/8" x 10'	16	2.82 lb.	25	40	15	ATZ38120
3/8" x 12'	16	3.39 lb.	25	40	12	ATZ38144
1/2" x 6'	13	3.03 lb.	12	50	22	ATZ12072
1/2" x 10'	13	5.06 lb.	12	40	15	ATZ12120
1/2" x 12'	13	6.07 lb.	12	40	13	ATZ12144
5/8" x 6'	11	5.06 lb.	8	50	21	ATZ58072
5/8" x 10'	11	8.44 lb.	8	40	15	ATZ58120
5/8" x 12'	11	10.1 lb.	8	40	13	ATZ58144
3/4" x 6'	10	7.30 lb.	5	50	23	ATZ34072
3/4" x 10'	10	12.2 lb.	5	40	15	ATZ34120
3/4" x 12'	10	14.6 lb.	5	40	14	ATZ34144
7/8" x 6'	9	10.0 lb.	4	50	21	ATZ78072
7/8" x 10'	9	16.7 lb.	4	40	15	ATZ78120
7/8" x 12'	9	20.0 lb.	4	40	13	ATZ78144
1" x 6'	8	13.1 lb.	3	50	21	ATZ1072

## Threaded Rod (continued)

Size	Threads/ Inch	Weight/ Piece	Pcs./ Tube	Tubes/ Pallet	Pallets/ 20 ft. Container	SKU
<b>Zinc Plated ASTM F1941 FeZn3A</b>						
1" x 10'	8	21.9 lb.	3	40	15	ATZ1120
1" x 12'	8	26.3 lb.	3	40	13	ATZ1144
1-1/8" x 6'	7	20.8 lb.	2	50	25	ATZ118072
1-1/8" x 10'	7	34.7 lb.	2	40	15	ATZ118120
1-1/8" x 12'	7	41.7 lb.	2	40	15	ATZ118144
1-1/4" x 6'	7	21.4 lb.	2	50	20	ATZ114072
1-1/4" x 10'	7	35.6 lb.	2	40	15	ATZ114120
1-1/4" x 12'	7	42.7 lb.	2	40	12	ATZ114144
1-1/2" x 6'	6	30.3 lb.	1	50	27	ATZ112072
1-1/2" x 10'	6	51.5 lb.	1	40	15	ATZ112120
1-1/2" x 12'	6	60.6 lb.	1	40	15	ATZ112144
<b>Stainless Steel</b>						
1/4" x 6'	20	0.78 lb.	50	50	23	ATSS14072
1/4" x 10'	20	1.30 lb.	50	40	15	ATSS14120
1/4" x 12'	20	1.56 lb.	50	40	14	ATSS14144
5/16" x 6'	18	1.28 lb.	35	50	20	ATSS516072
5/16" x 10'	18	2.13 lb.	35	40	15	ATSS516120
5/16" x 12'	18	2.56 lb.	35	40	12	ATSS516144
3/8" x 6'	16	1.86 lb.	25	50	19	ATSS38072
3/8" x 10'	16	3.10 lb.	25	40	15	ATSS38120
3/8" x 12'	16	3.73 lb.	25	40	12	ATSS38144
1/2" x 6'	13	3.34 lb.	12	50	21	ATSS12072
1/2" x 10'	13	5.56 lb.	12	40	15	ATSS12120
1/2" x 12'	13	6.67 lb.	12	40	13	ATSS12144
5/8" x 6'	11	5.57 lb.	8	50	20	ATSS58072
5/8" x 10'	11	9.28 lb.	8	40	15	ATSS58120
5/8" x 12'	11	11.1 lb.	8	40	12	ATSS58144
3/4" x 6'	10	8.04 lb.	5	50	22	ATSS34072
3/4" x 10'	10	13.4 lb.	5	40	15	ATSS34120
3/4" x 12'	10	16.0 lb.	5	40	14	ATSS34144

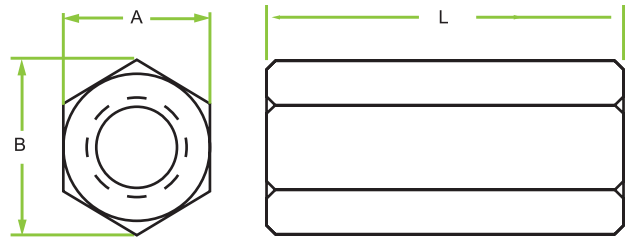
## Bent Threaded Rod

Size	Threads/ Inch	Weight/ Piece	Pcs./ Tube	Tubes/ Pallet	Pallets/ 20 ft. Container	SKU
<b>Zinc Plated ASTM F1941 FeZn3A</b>						
1/2" x 52"	8	2.74 lb.	15	50	21	BRTZ12528



**Hex coupling nuts** — For attaching two threaded fasteners together, such as a length of threaded rod to another length of threaded rod.

- ☑ Low carbon steel (1008) for sizes up to 1 in. — C1045 for size greater than 1 in.
- ☑ Hardness HRB 68 - HRC 32
- ☑ Proof load strength: 90,000 PSI minimum

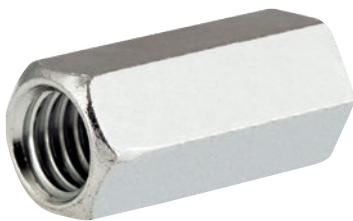


## Regular Coupler



SKU	Size	Threads/ Inch	Width Across Flats (A)	Width Across Corners (B)	Length (L)	Pcs./ Box
<b>Zinc Plated ASTM F1941 FeZn3A</b>						
RCOUPZ14	1/4"	20	7/16"	0.51"	7/8"	1,000
RCOUPZ38	3/8"	16	9/16"	0.65"	1-3/4"	500
RCOUPZ12	1/2"	13	11/16"	0.79"	1-3/4"	400
RCOUPZ58	5/8"	11	13/16"	0.94"	2-1/8"	250
RCOUPZ34	3/4"	10	1"	1.18"	2-1/4"	150
RCOUPZ78	7/8"	9	1-1/4"	1.44"	2-1/2"	75
RCOUPZ1	1"	8	1-1/4"	1.44"	2-1/2"	75
RCOUPZ118	1-1/8"	7	1-1/2"	1.73"	3"	50

## Economy Coupler



SKU	Size	Threads/ Inch	Width Across Flats (A)	Width Across Corners (B)	Length (L)	Pcs./ Box
<b>Zinc Plated ASTM F1941 FeZn3A</b>						
ECOUPZ14	1/4"	20	3/8"	0.43"	7/8"	2,500
ECOUPZ38	3/8"	16	5/8"	0.73"	1-1/8"	1,250
ECOUPZ12	1/2"	13	5/8"	0.73"	1-1/4"	625

