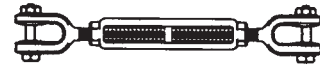


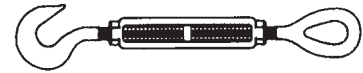
Size (Dia. x Take-up)	Turnbuckles / Hot Galvanized, Drop Forged					
	Approximate Weight Each in Pounds			Working Load Limit in Lbs.		Av. Overall Lght. with Ends in Closed Pos.
	Approximate Weight Each in Pounds	Eyes and / or Hooks	Jaw & Eye	Hook & Hook Hook & Eye	Eye & Eye Jaw & Eye Jaw & Jaw	
1/4"x4"	.3	.3	.4	400	500	8.25
5/16"x4.1/2"	.5	.53	.58	700	800	9.56
3/8"x6"	.75	.82	.93	1,000	1,200	11.88
1/2"x6"	1.50	1.62	1.68	1,500	2,200	13.31
1/2"x9"	1.75	1.82	1.85	1,500	2,200	16.31
1/2"x12"	2.18	2.19	2.20	1,500	2,200	19.31
5/8"x6"	2.63	2.69	2.82	2,250	3,500	15.50
5/8"x9"	3.00	3.01	3.25	2,250	3,500	18.50
5/8"x12"	3.25	3.50	3.75	2,250	3,500	21.50
3/4"x6"	3.75	4.25	4.68	3,000	5,200	17.00
3/4"x9"	4.50	5.00	5.38	3,000	5,200	20.00
3/4"x12"	5.75	5.75	6.12	3,000	5,200	23.00
3/4"x18"	7.00	7.25	7.75	3,000	5,200	29.00
7/8"x12"	8.38	8.88	9.38	4,000	7,200	24.63
7/8"x18"	10.25	10.60	11.44	4,000	7,200	30.63
1"x6"	10.75	11.10	11.80	5,000	10,000	20.63
1"x12"	11.25	12.	12.88	5,000	10,000	26.63
1"x18"	14	14.75	16.1	5,000	10,000	32.63
1"x24"	17	17.75	18.6	5,000	10,000	38.63
1.1/4"x12"	19	21.2	23.6	5,000	15,200	29.88
1.1/4"x18"	24.1	26.0	26.6	5,000	15,200	35.88
1.1/4"x24"	25	28.7	31.2	5,000	15,200	41.88
1.1/2"x12"	27	31.1	35.5	7,500	21,400	32.88
1.1/2"x18"	31.2	36.4	40.7	7,500	21,400	38.88
1.1/2"x24"	38.2	44.2	47.63	7,500	21,400	44.38
1.3/4"x18"	53	57.5	62	–	28,000	41.38
1.3/4"x24"	58	60	64	–	28,000	47.75
2"x24"	90	102	115	–	37,000	51.75
2.1/2"x24"	163	180	200	–	60,000	58.50
2.3/4"x24"	180	214	248	–	75,000	61.50

Turnbuckles

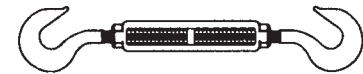
Hot Galvanized, Drop Forged



Jaw & Jaw



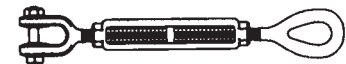
Hook & Eye



Hook & Hook



Eye & Eye



Jaw & Eye

– Details on opposite page –

Cleats

Length	Open Based Cleat / Galvanized Iron	
	Bolt Size	Weight in Pounds
4"	#10 FH	.24
5"	#10 FH or HEX	.32
6"	1/4" HEX	.38
8"	5/16" HEX	1.06
10"	3/8" HEX	2.12
12"	3/8" HEX	3.56
14"	1/2" HEX	5.88
18"	5/8" HEX	14

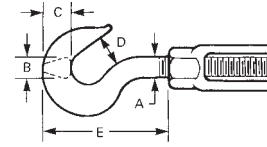
Open Base Cleats

Galvanized Iron



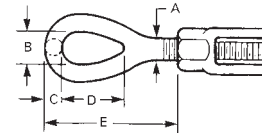
Turnbuckles / Hook Dimensions				
A	B	C	D	E
1/4"	.25	.41	.45	1.66
5/16"	.31	.44	.50	1.91
3/8"	.38	.53	.56	2.28
1/2"	.50	.69	.66	2.84
5/8"	.63	.84	.84	3.53
3/4"	.75	1.00	.97	4.31
7/8"	.88	1.19	1.13	5.00
1"	1.00	1.38	1.25	5.69
1.1/4"	1.06	1.50	1.50	6.91
1.1/2"	1.31	1.75	1.88	8.68

Turnbuckles/Hook



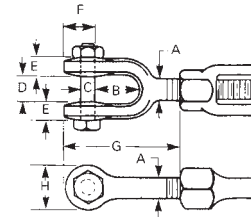
Turnbuckles / Eye Dimensions				
A	B	C	D	E
1/4"	.34	.22	.78	1.78
5/16"	.44	.28	.94	2.19
3/8"	.53	.34	1.13	2.56
1/2"	.72	.44	1.44	3.22
5/8"	.88	.50	1.75	3.88
3/4"	1.00	.63	2.13	4.69
7/8"	1.25	.75	2.38	5.25
1"	1.44	.88	3.00	6.38
1.1/4"	1.81	1.13	3.56	7.75
1.1/2"	2.13	1.25	4.13	8.63
1.3/4"	2.38	1.50	4.69	10.00
2"	2.69	1.75	5.75	12.13
2.1/2"	3.13	2.00	6.50	13.56
2.3/4"	3.25	2.25	7.00	15.00

Turnbuckles/Eye



Turnbuckles / Jaw Dimensions							
A	B	C	D	E	F	G	H
1/4"	.63	.25	.41	.28	.50	1.63	.63
5/16"	.88	.25	.47	.28	.50	2.00	.69
3/8"	.88	.31	.50	.31	.59	2.19	.81
1/2"	1.06	.38	.63	.41	.75	2.75	1.00
5/8"	1.31	.50	.75	.50	1.03	3.50	1.31
3/4"	1.50	.63	.94	.56	1.28	4.13	1.63
7/8"	1.75	.75	1.13	.69	1.47	4.84	1.88
1"	2.06	.88	1.19	.78	1.66	5.53	2.13
1.1/4"	2.81	1.13	1.75	1.00	2.09	7.19	2.63
1.1/2"	2.81	1.38	2.06	1.06	2.47	7.88	3.13
1.3/4"	3.38	1.63	2.38	1.25	2.91	9.38	3.50
2"	3.75	2.00	2.50	1.56	3.53	10.88	4.19
2.1/2"	4.19	2.25	2.88	1.56	4.63	13.34	5.63
2.3/4"	4.44	2.75	3.50	1.63	5.38	15.00	6.13

Turnbuckles/Jaw

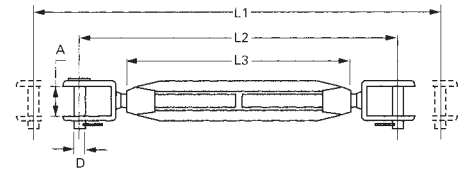


Read important warnings and information on the inside cover of this catalog titled Cautions.

Size	Turnbuckle Welded Forks / Stainless Steel 316 Forged						
	Breaking Load in Pounds	Weight in Pounds	A	D	L1	L2	L3
3/16"	1,800	.12	.25	.19	7.50	5.00	3.13
1/4"	2,400	.22	.28	.25	8.50	5.50	3.50
5/16"	4,500	.35	.31	.31	9.50	6.50	4.00
3/8"	6,500	.55	.38	.38	10.75	7.25	4.50
1/2"	11,000	1.10	.50	.50	14.25	9.50	6.00
9/16"	16,000	1.80	.56	.56	15.25	10.25	7.00
5/8"	20,000	2.70	.63	.63	18.00	12.00	8.00

Turnbuckles Welded Forks

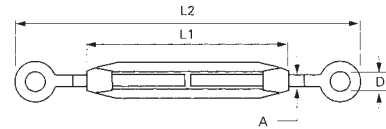
Stainless Steel Type 316 Forged



Size	Turnbuckle Welded Forks / Stainless Steel 316 Forged					
	Breaking Load in Pounds	Weight in Pounds	A	D	L1	L2
3/16"	1,650	.10	.19	.31	2.75	4.75
1/4"	2,200	.20	.25	.38	3.38	6.38
5/16"	4,200	.30	.31	.56	4.75	8.00
3/8"	6,300	.50	.38	.63	6.00	9.50
1/2"	10,000	1.00	.50	.61	8.00	12.00
5/8"	15,000	1.80	.63	.75	10.00	15.50

Turnbuckles Eye & Eye

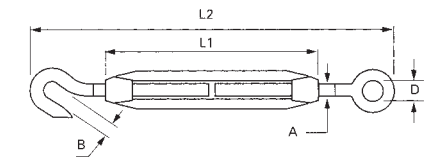
Stainless Steel Type 316 Forged



Size	Turnbuckle Welded Forks / Stainless Steel 316 Forged						
	Breaking Load in Pounds	Weight in Pounds	A	D	L1	L2	L3
3/16"	1,650	.10	.19	.36	.31	2.75	4.75
1/4"	2,200	.20	.25	.38	.38	3.38	6.38
5/16"	4,200	.30	.31	.44	.56	4.75	8.00
3/8"	6,300	.50	.38	.50	.63	6.00	9.50
1/2"	10,000	1.00	.50	.56	6.1	8.00	12.00
5/8"	15,000	1.80	.63	.63	.75	10.00	15.50

Turnbuckles Eye & Hook

Stainless Steel Type 316 Forged



Size	Turnbuckle Welded Forks / Stainless Steel 316 Forged					
	Breaking Load in Pounds	Weight in Pounds	A	D	L1	L2
3/16"	1,650	.10	.19	.36	2.75	4.75
1/4"	2,200	.20	.25	.38	3.38	6.38
5/16"	4,200	.30	.31	.44	4.75	8.00
3/8"	6,300	.50	.38	.50	6.00	9.50
1/2"	10,000	1.00	.50	.56	8.00	12.00
5/8"	15,000	1.80	.63	.75	10.00	15.50

Turnbuckles Hook & Hook

Stainless Steel Type 316 Forged

